

PORT STEPHENS COMMUNITY ARTS CENTRE NEWSLETTER

June 2026



Cultural Close, off Shoal Bay Road,
NELSON BAY
Ph: 4981 3604
Web: <https://pscac.org.au/>
Email: admin@pscac.org.au

• In this issue:

- President's Report
- Up Coming Holidays
- Banners for Migratory Birds
- Rosters Co-Ordinator
- Setting the Alarm
- Art Exchange
- People's Choice
- Fusion Group
- Pottery Groups
- Plein Air
- Woodies Group
- Monday Craft Update
- Welfare
- Bonsai Group
- Spinners & Weavers
- Patchwork Groups
- From the Secretary
- Gallery Manager
- Embroidery Group
- Exploring Art & Pastel Group
- Social Saturday
- Café News
- Papercraft
- Open Week Flyer
- Monday AM Painters
- Monday PM Mixed Media
- Monday Watercolour Group
- Garden Group
- Painters Exhibition Team
- Mosaic Group
- Featured 3D Artist

Upcoming Holidays
Kings Birthday: - 8 June 2026
NSW School Holidays:
Winter: 6-17 July 2026

President's Report

As we move into the quieter winter months, I would like to take this opportunity to sincerely thank all our dedicated volunteers who continue to keep the Port Stephens Community Arts Centre functioning so successfully.

Our Centre relies heavily on the generosity, commitment, and goodwill of members who willingly give their time to support the day-to-day running of our beautiful community space. Every volunteer contribution, no matter how small it may seem, plays an important role in ensuring the Centre remains welcoming, vibrant, and sustainable for everyone to enjoy.

A Gentle Reminder: Desk Duty Responsibilities

Our roster system is essential to keeping the Centre open and operating smoothly. If you are unable to attend your allocated shift, please make every effort to arrange your own replacement where possible and advise the appropriate coordinator. Reliable attendance greatly assists your fellow volunteers and helps maintain a positive experience for visitors and members alike.

Thank you for your cooperation and support with this!

Celebrating the 'Fibre to Thread' Exhibition

Congratulations to everyone involved in the recent Fibre to Thread Exhibition. The showcase featured an impressive range of creativity, skill, and dedication, and it was wonderfully received by our visitors. A huge thank you to all the exhibitors, organisers, installers, and volunteers who contributed to making the exhibition such a fantastic success.

High Tea Success with the Café Team

A special thank you also goes to Antonia and the Café Team for delivering yet another successful High Tea event. These occasions continue to bring members and the wider community together in a warm, enjoyable atmosphere, while providing valuable fundraising and community engagement for the Centre.

Looking Ahead

Winter can sometimes feel a bit quieter and slower, but it is also a wonderful time to stay connected, continue creating, and support and encourage one another. Community arts organisations thrive when members actively participate, volunteer, and share their unique talents and enthusiasm.

Thank you once again to everyone who contributes to the ongoing success of the Port Stephens Community Arts Centre. Your efforts are deeply appreciated, and I look forward to seeing you around the Centre this season.

Meryl



All has been employed in the editing of this Newsletter.

**Free entry to Art Competition:
Banners for Migratory Birds!**

Entries are coming in don't forget to commit to this free Art Competition. Are you ready to see your artwork transformed into high-profile street banners across the Tomaree Peninsula—and make a real difference for our planet? This isn't just an art contest; it's a movement to protect some of the world's most incredible travellers.

Art With An Impact: Our local wetlands are vital stopovers for migratory shorebirds like the **Far-Eastern Curlew** and **Latham's Snipe**. By entering, your art becomes a powerful voice for conservation:

- **Raising Awareness:** Your designs will educate thousands about the "Sister Wetland" connection between Port Stephens and Kushiro, Japan.
- **Protecting Habitats:** Highlighting these species reminds our community of the urgent need to preserve the fragile ecosystems they depend on for survival.
- **Global Connection:** Celebrate a journey that spans hemispheres, proving that local action has a global reach.

Prizes: OVERALL: \$2,000
OPEN 1st: \$1,500
OPEN 2nd: \$1,000

To Enter:

<https://pscac.org.au/east-asian-australasian-flyway-art-competition/>



Critical Need: Roster Coordinator

We are urgently seeking a dedicated volunteer to manage our gallery rosters. This important role is essential to our daily operations and helps co-ordinate our wonderful team of volunteers. If you are organised, enjoy communicating with people, and can help keep things running smoothly, we would love to hear from you.

Join the Desk Duty Team

Be the friendly face of our gallery! We are also looking for reliable volunteers to assist with desk duty. This vital role supports our members, welcomes visitors, and helps create a warm and inviting atmosphere for everyone who walks through our doors.

Whether you can help regularly or occasionally, your time and support would make a real difference to our gallery community.

Setting the Alarm at the end of each day

Please ensure all doors are closed including the front door of the Gallery, and the front door drop bolt is firmly in place. When you are ready to exit press ON to arm the alarm hold it for a couple of seconds. Follow the messages on the keypad until you see the message armed. You then have 40 seconds to exit the building and lock the door.



To Set alarm follow instructions on the keypad after pressing ON until the screen reads Armed then leave the building and lock the front door



Sister Cities Committee - Art Exchange

Port Stephens Sister Cities Committee is planning an exchange with our three Sister Cities in Japan - Kushiro, Yugawara and Tateyama. On this occasion we are planning an art-based exchange with local artists interacting with art groups in our sister cities. Previously several of our members expressed interest in going on this trip. Details are below. Please contact admin@pscac.org.au to let us know if you would like to join this trip in October/November 2027.

Tour numbers: 15~20 adult members

Estimate package cost:

Based on 15 members, twin room to share \$5304 per person Total \$79,560

Based on 20 members, twin room to share \$5239 per person Total \$104,780

Single supplement: \$839 per person

The quote is based on an exchange rate of 108 yen to the dollar which is subject to change until the final tour invoice is issued. Fuel surcharges and airport taxes are included but are subject to change until final ticketing by the airlines

Tour inclusions:

Flights: All Nippon Airways and Air Do

- NH879 14 October 2027 Sydney 20:55 – Haneda 5:45 (Arrive 15 October)
- HD71 15 October 2027 Haneda 7:40 - Kushiro 9:20
- HD72 18 October 2027 Kushiro 9:55 – Haneda 11:40
- NH879 3 November 2027 Haneda 20:00 – Sydney 9:25 (Arrive 3 November)

** Aircraft group seating will be automatically allocated by the airline. JTB will endeavour to confirm preferred seating with the airline however this cannot be guaranteed.

** Please note that if the total group size decreases by 20% or more, or falls below 10 participants, penalties or cancellation fees may apply after the deposit has been paid.

Accommodation:

- Homestay arrangement by Kushiro city (Sister city), Hokkaido - 3 nights October 15-17
- Hotel Vista Kanazawa or similar, Kanazawa - 3 nights October 18-20
- (TBA) Traditional Japanese Inn or Hotel in Takayama, Gifu - 1 night October 21
- Homestay arrangement by Yugawara city (Sister city), Kanagawa - 3 nights October 22-24
- Keihan Kyoto Grande or similar, Kyoto - 4 nights October 25-28
- Homestay arrangement by Tateyama city (Sister city), Chiba - 3 nights October 29–30
- Toshi Centre Hotel or similar, Tokyo - 2 nights November 1-2



Travel Agent: J T B Australia Pty Ltd
Level 18, 456 Kent Street, Sydney, NSW 2000
Tel: 1800-105-451
ABN 99 003 218 728 License No: 2TA001972

Breakfast included daily, Dinner included on 21 October in Takayama.

Hotels listed above and rooms are based on twin or triple share for the students and singles for the teachers subject to availability at the time of booking.

No JTB arrangements for:

- the three nights in Kushiro from October 15-17 inclusive
- the three nights in Kanagawa from October 22-24 inclusive
- the three nights in Tateyama from October 29-30 inclusive

Also included:

- 18 October: Bullet train ticket from Tokyo to Kanazawa
- 21 October: Bullet train and Rapid train ticket from Kanazawa to Takayama
- 22 October: Bullet train and Rapid train ticket from Takayama to Yugawara
- 25 October: Bullet train and local train ticket from Yugawara to Kyoto
- 29 October: Bullet train and local train ticket from Kyoto to Tateyama
- 1 November: Chartered coach from Tateyama to Tokyo
- 2 November: Chartered coach from Tokyo to Haneda airport
- Japanese consumption taxes
- All applicable fuel surcharges, airport levies and government charges as of this quote date but subject to change until final payment received
- **Complimentary inclusions:**
Teacher access to the JTB app (M-trip) that includes your tour details plus useful information such as shops, restaurants and attractions etc in Japan.

Jane Parker

People's Choice Award

Congratulations to our joint winners of the display period ending 31 March entitled 'Modern Contemporary', with five votes each, Milja Philipson for her photograph 248 (right) and Yvonne Morrison for her painting 'Willis Island (far right).

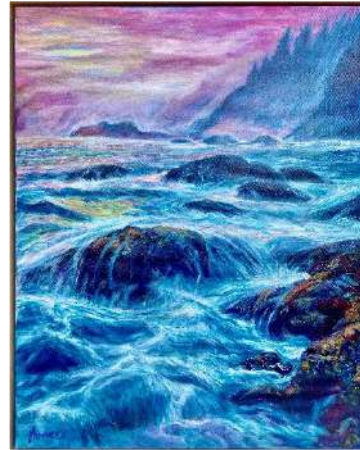
Runners up with four votes each were Christine Leaming with 'Shore break' and Tom Godfrey with 'The Beach'.

There were an amazing 108 votes in total across nearly every category.

For the second display period 'In the Mist' running to 27 April our outright winner with five votes is Peter Nosti with his acrylic painting 'Misty Morning'(right). Runner up with nine votes over multiple items of woodwork and jewellery (far right) as part of the 3D Featured Artist display is Kate Wilkie.

A total of 65 votes were received shared over 32 different artists!

Mel Delaney



Fusion Group

Fusion members enjoyed a wonderfully creative and busy month during April. We were delighted to welcome the very talented Rachel Develin, who inspired everyone with her imaginative way of turning recycled materials into beautiful flowers and decorative art.

From delicate teabag creations to colourful flowers made from recycled plastics, Rachel demonstrated how simple everyday items can be transformed through colouring, heating, twisting, and shaping into stunning works of art. Members thoroughly enjoyed learning new techniques and ideas, and Rachel generously shared not only her time, but also her knowledge, tips, and materials over several days. We are hopeful she will be able to return in the future to conduct a special workshop for our group.

Our involvement in *The Fibre to Thread Exhibition* also highlighted the wonderful teamwork and many talents within the Fusion Group. Even though several members were away, there was no shortage of volunteers helping with labelling, setting up displays, restocking items, packing down, and assisting in the Café during the opening morning tea.

The Café team had a very busy morning and nearly sold out completely — with only a couple of scones left from the 42 baked! Meanwhile, as Wednesday mornings are our regular Fusion gathering time, other members warmly welcomed visitors and helped create a friendly atmosphere throughout the Centre.

A big thank you to everyone who contributed their time, enthusiasm, and support.

Colleen & Sue



Pottery Groups

A lot has been happening up at the barn or Gumtree studio as it's now known.

We had a very successful reduction firing in the gas kiln, with Dave Briskham doing a great job, making glazes, stacking and firing the kiln (*below centre*). This is a lot of work, and the kiln needs to be attended from crack of dawn for most of the day. But some beautiful and different results as you can see (*below right*). Very exciting for us, and quite a learning curve too.

The Fibre to Thread Exhibition in the gallery had some of the potters exploring a different discipline. A challenge, but we're up for it!

As you can see all of the Potter's contributions are experimental - from Carole Drivers painting with clay on ecoprinted fabric (*above left*), to Lesley Lewis's ceramic (*above right*) and a great variety of unusual materials on textile, to Meri Andric's delicate silk painting (*above centre*), to Heidi Harber's sculptural weaving (*below left*).

Carol Driver



PLEIN AIR PAINTERS

The Wednesday Painters have found a wonderful new location at Roy Wood Reserve — and what a gem it is! As you can see, this is only one angle of the reserve, with so much more variety waiting to inspire artists around every corner.

Last week, while painting, we enjoyed chatting with a group of bird watchers visiting from the Illawarra who were admiring our beautiful wetlands. The reserve offers endless subjects to paint and draw, from tranquil water views to birdlife and natural landscapes.

With so much inspiration on offer, the Wednesday Painters will certainly be staying here for a while.

Robyn

Woodies

Card Holders

Woodies have made some prototype card holders (*right*) for the Paper Craft group to help make and display cards. Always happy to help and contribute with new ideas.

Storage

Woodies have had a major reorganisation of their tool store room storage, driven by Greg Cumberland, our workshop manager. We've purchased two side by side storage cabinets (*near right*) to help organise our non-power tools.

Everything is now labelled and the small things that used to go missing are now in plain sight. The open drawer, displayed, has 150 router bits, making it easy to select the one you need, rather than hunting through drawers and boxes. Great job Greg.

Roger



Monday Craft Group Update

The Monday Craft Group has now closed. Many of the members who are still interested in continuing their craft activities have joined the Tuesday Patchwork Group, which offers much more than patchwork alone.

Although I haven't quite settled in yet, I'm hopeful that this Tuesday I'll have the chance to get to know the members of the group a little better.

Faye Clifton

Welfare

Good NewsLong time member Liz Weiss will be returning home from hospital this week. She fell and broke her hip at home several weeks ago. Liz is looking forward to returning home and back to her Bonsai garden.

Colleen Sessions

Bonsai Group

We extend our best wishes to Liz for a speedy recovery following surgery and we hope she will soon be back home and doing well.

Five of our members were invited to attend a "Meet and Greet" at Natura Village, Bobs Farm, where they gave an interesting and informative talk on the hobby of Bonsai. Bonsai is an ideal pastime for residents of retirement villages who may have given up large gardens but still enjoy being involved with plants and gardening.

Steve also gave a very worthwhile presentation on "Back to Basics". It is always good to be reminded of the correct techniques, as it can be tempting to take shortcuts and then feel disappointed with the finished result.

Our trees have certainly appreciated the mild late Autumn weather, and the recent rain has been an added bonus (*right and middle right*).

Happy Bonsaiing,

Carol



Spinning and Weaving Group

The Spinning and Weaving Group took part in the *Fibre to Thread Exhibition* held during April and May(right), with several members enjoying successful sales of their work.

In May, the group also held its annual two-day camp at Tocal College. Members enjoyed a range of creative activities, including wrapping yarns around coiled rope to create coasters and bowls using both hand-spun wool and commercial yarns(below).

Along with our own members, we were pleased to welcome visitors from Tea Gardens and Sydney, making the camp an enjoyable and social occasion for everyone(right).

Margaret & Helen



Patchwork hand stitched zipper bag(left).

Wendy Barwick's Patchwork Quilt for the Fibres and Threads exhibition(left).

Thursday Patchwork

Congratulations to Wendy Nutt who won 1st place in the Recycled category (*right*) in the Australian Quilt Show in Melbourne. Many components went into this art quilt gathered over a number of years. Flour bags, both fabric and paper, table cloths, a grandmother's apron, tea bags, cheese bags, Spanish paella rice bags, threads saved from flour and tea bags, herbs from the garden, eco dye from onions and avocado and well-used batting from a design wall. Well worth the win Wendy!

Darlene has been putting her blocks together for her first large quilt which is called a Chandelier Quilt (*below*). It's all still in progress but she is excited to be getting closer to finishing it.

Wendy gave a talk on how she made her Patchwork coat (*below right*) this month, giving us inspiration to have a go. With winter here we might see a few creations happening.

Keep on stitching ladies as it's good for your mental health 😊

Sally O'Neill



From the Secretary

Membership

Welcome to the following newbies:

Sally Appleby, Deborah Calow, Louise Castle, Catherine Draper, Christine Kirby, Katherine Putica and Robin Murray.

Renewals for 2026-27:

Early in June Invoices will be sent to all members for membership for the upcoming year. Please follow the instructions and renew promptly from 1 July 2026 to continue enjoying your creative journey at the Arts Centre.

Jane Parker

Gallery Manager

Fibre to Thread Exhibition: Concluded 26 May 2026

What an incredible launch of our very first Fibre to Thread Exhibition. Visitors absolutely loved the diverse displays in the Main Gallery and Hallway.

You all have so much hidden talent! In fact, some of the small, freestanding items were so wonderful that we have moved them to the Veranda shelves for everyone to enjoy.

We cannot wait to see what amazing textile pieces our creative community dreams up next.

What's On Now: Through 21 July 2026

Main theme- Botanical:

Immerse yourself in a burst of colour! Beautiful and expressive botanical artwork is currently filling the Main Gallery and Hallway.

Annex Displays:

Print-makers: Check out this truly awe-inspiring display of different print-making techniques.

Photography: Explore this lovely new display capturing a moment in time across a variety of themes.

Featured Members:

We are thrilled to showcase the unique styles and techniques of:

2D: Robyn Bailey

3D: Metta Henderson

Our community is such an endless source of talent!

Housekeeping:

Closing Gallery: Please remember to switch off all the lights before locking the Gallery.

Labels: For any new item for sale, please pop the month and year on the back of the label.

New Stock: Please place any new piece in the designated drawer or cabinet so our display team can work their magic.

Old Stock: Friendly reminder to check the old stock drawer or cabinet regularly, and clear out old items.

Meri Andric



Embroidery Group

The Embroidery Group enjoyed a very successful *Fibre to Thread Exhibition*, with many members creating beautiful items for both display and sale. Featured artist Noela's exhibit was exquisite, showcasing a range of highly delicate and intricate works that were greatly admired by visitors.

Our display included a wonderful variety of handmade embroidered pieces such as scissor keepers, bookmarks, cushions, framed pictures, pin cushions, needle cases and many other creative items.

In mid-June, members will head to Tocal for a short retreat where we look forward to honing, polishing and refining our embroidery skills while enjoying time together in a relaxed and inspiring setting.

Penelope



Exploring Art/Pastels

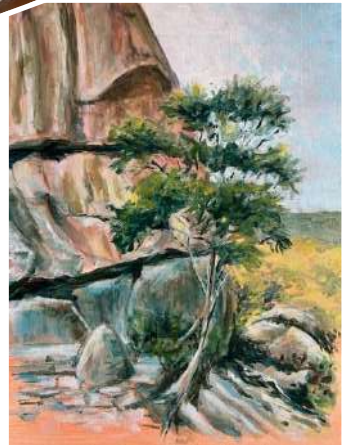
Our regular member, the very talented Claire Wise, approaches each project with enthusiasm and creativity. Eager to develop her skills across a variety of mediums, Claire is always willing to explore new artistic challenges.

Her beautiful Concertina Sketchbook (*right*) captures scenes from her daily walks, reflecting both observation and imagination in a unique and personal way.

This month, members have been focusing on completing small works in a single sitting — an exercise encouraging spontaneity, confidence and fresh expression (*below right*). Here are some examples of Claire’s inspiring work.

Join us every Wednesday morning if you would like to further your own art journey in a friendly and supportive group.

Christine Leaming



Social Saturday

We always have an enjoyable time on Saturday mornings sharing our knowledge and welcoming all members of the Gallery to display their talents.

In the past month the Mosaic group gave a demonstration of their Craft from design, layout, cutting and assembly, producing a beautiful result. The photo displays the people enjoying their time.

The recent 'Ink and Watercolour' (*left*) workshop produced some exciting results with an enthusiastic group as the photo shows.

We encourage all Groups to contact Judy Jones to join the Social Saturday mornings so they can share their talents and friendship.

Social Saturday welcomes everybody from 10am to 1pm, so come along and join us.

Have a chat with Judy Jones at the Gallery for more info.

Judy

Café News

Our café team has certainly been busy recently, catering for two wonderful events that kept everyone on their toes!

The opening morning tea for the Fibre to Thread Exhibition welcomed around 40 guests — mostly members, along with some lucky visitors. Guests enjoyed specialty teas and coffee served with delicious scones and date loaf while taking in the exhibition’s atmosphere.

Then on Saturday 9 May, we held one of our ever-popular High Tea events, with both morning and afternoon sittings attracting an excellent attendance. As always, the café looked beautiful, the food was delicious, and guests thoroughly enjoyed the experience.

Behind every successful High Tea is a dedicated team of volunteers. From those who clean and prepare the café area, set up tables and decorations, serve guests, cook, make coffee and tea, through to the many hands helping with pack-up and the mountain of washing up — it truly is a team effort.

Could you lend a hand? We would love to welcome more volunteers to our café team. If you think you could help in any way, please email the art centre admin with your phone number and let’s have a chat about how you could get involved. admin@pscac.org.au

Antonia



Papercraft

Welcome to our new members, Jayne, Kathy and Louise.

The wonderful thing about new members in the group is revising our skills and gaining a new perspective on techniques we might take for granted.

It is also great when new members bring their skills, experiences and enthusiasm to the group.

Recently we have played with watercolour wet on wet techniques to make our own backgrounds and created some exciting sentiments with new die cutters.

Next is an at home challenge to make a card expressing Port Stephens and an in-class challenge using scraps!

Here a couple of simple multi-dimensional cards we made in class this month.

Antonia





Monday AM Painting

We're all enjoying our Monday mornings together. Painting our favourite subjects, with very different mediums.

Best wishes to Judy and Paul who have been on their own medical journey. Winter is starting to set in so stay well everyone.

Moira Coulston

A range of works in the new exhibition 'Botanicals' from: Chris Morgan, Sylvia Heath, and Jennifer Haynes.



Monday PM Mixed Media Group

A big warm welcome to all the new faces who have joined us recently!

Monday afternoons in the Westralia Room have been full of energy, creativity and plenty of friendly conversation. It's wonderful to see everyone sharing ideas, encouraging one another and simply enjoying the time together. Thank you all for helping make these sessions so lively and welcoming.

To all our regular members — thank you for your continued enthusiasm and support of the Arts Centre. Whether you volunteer, attend classes, help at events or simply come along and create, every contribution helps keep our wonderful community thriving.

And remember — paint for yourself and enjoy the process. Sometimes the best things happen when we stop worrying about the outcome and simply have fun experimenting and creating.

June is also a great time to try something new. Perhaps test out a different technique, explore a new medium or combine materials you haven't used before. You never know where creativity may lead!

Don't forget to check the Arts Centre notice board for upcoming events, volunteering opportunities and other ways to get involved.

Wishing everyone a happy and creative month ahead — see you Monday PM!

Bev Henry

Monday Watercolour Group

The group has been busy preparing paintings for the upcoming Botanical Exhibition, with members exploring a variety of floral subjects and techniques. Recently, Jane shared a wonderful demonstration on painting loose roses, showing how the technique of "lifting out" paint can be used to create soft petals and delicate highlights. Members also discovered that this versatile method can be adapted to paint many other types of flowers.

Attendance numbers continue to fluctuate due to travel and illness, but it was lovely to welcome Nada back to the group and see her painting with us again (below).

Sarah Locke & Roslyn Clarke





Garden Group

The garden is looking especially beautiful at the moment with the stunning Confederation Rose, *Hibiscus mutabilis*, now in flower. This remarkable shrub has the unique ability to change the colour of its blooms, beginning as white flowers before gradually turning pink as they mature. Native to China, we are fortunate to have two of these lovely shrubs flourishing in our garden.

As always, there is plenty happening in the garden with members busy weeding, replanting and pruning to keep everything looking its best. The good news is that all of the leaks in our watering system have now been repaired — many thanks to Wayne and Anita for their hard work and assistance.

Helen

Painters Exhibition Team

Looking Back & Moving Forward

As we move through our 2026 exhibition calendar, it continues to be inspiring to see the incredible talent within our Centre. The recent *Fibre to Thread Exhibition* beautifully showcased the creativity, versatility, and dedication of our members across many different art forms. This exhibition is fast becoming one of PSCAC's signature events, and everyone involved should feel extremely proud of its growing success.

With this successful exhibition behind us, we are already looking ahead to our next major event — **Art Prize 2027**.

Dates: 5 – 21 March 2027

Join the Behind-the-Scenes Team!

An exhibition of this scale takes many helping hands, and we are now inviting members to become part of the organising, set-up, and hanging teams for Art Prize 2027.

If you enjoy being involved, working with fellow creatives, and helping bring exhibitions to life, we would love to hear from you.

How To Volunteer: Please see Marianne for more details.

Being part of the exhibition team is a rewarding way to support the Centre, make new connections, and help showcase the wonderful artistic talent within our community.

Thank you to everyone for your continued enthusiasm, creativity, and support.

Until then, enjoy our next exhibition — *Botanicals*.

Marianne

Mosaics

The Mosaics Group continues to grow in popularity, with several "newbies" joining us recently. It's wonderful to see so many people interested in learning about this colourful and creative art form.

A number of us also took part in Social Saturday on 18 April, where I demonstrated the process of making mosaics and chatted with visitors about how our projects come together. The session was very well attended, and there was lots of interest and enthusiasm from members stopping by to ask questions and see what we are creating.

At the moment, we are busy working on a large mosaic sign for the upper building which has been renamed "**Gumleaf Studio**". It's an exciting project and we are hoping to have it completed by the end of June.

We always enjoy welcoming visitors, so feel free to pop in and see what we're up to. The Mosaics Group meets on the 2nd and 4th Wednesdays of each month from 9.30am until noon.

Kim Reilly



Featured 3D Artist – Noela McCarthy



Noela McCarthy Embroiderer

Noela McCarthy's early appreciation of embroidery began with her mother's work, where careful observation and admiration first sparked a lifelong interest in needle and thread. This early influence developed through her school years, where she discovered both skill and satisfaction in creating textile pieces, later expressed in the design and beading of her own debutante dress.

After a period devoted to work, travel, and family, Noela returned to embroidery while living in Penang, Malaysia. There, she began exploring a wider range of techniques, producing a variety of pieces that marked a renewed commitment to her practice.

A pivotal moment came in 1998 when she met Margaret Freeman, who introduced her to Port Stephens Community Arts Centre and to a broader world of embroidery. Since then, Noela has studied under a number of accomplished tutors, developing a rich and varied repertoire of stitches and techniques.

During her time at the Arts Centre, Noela took on the role of Group Leader for the Embroidery Group. In this position, she organised a number of workshops to help members develop and refine their skills. Her work reflects both a deep respect for traditional embroidery and an ongoing curiosity to explore its possibilities, shaped by years of learning, observation, and creative dedication.



OPEN WEEK

15 – 20 JUNE



PORT STEPHENS
COMMUNITY ARTS CENTRE

Drop in, see our members at work, and discover a community that lives and breathes creativity. We'll be delighted to welcome you. Come and experience what we do – perhaps you'll be inspired to join us.

MONDAY 15 JUNE 10am – 12noon Painting General 1pm – 3pm Painting Mixed Media Painting Watercolour	TUESDAY 16 JUNE 10am – 12noon Patchwork Woodwork	WEDNESDAY 17 JUNE 10am – 12noon Exploring Art / Pastels Creative Textiles Pottery Spinning & Weaving
THURSDAY 18 JUNE 10am – 12noon Beadwork Papercraft	FRIDAY 19 JUNE 10am – 12noon Embroidery	SATURDAY 20 JUNE 10am – 12noon Social Saturday (mixture of all activities)

Come and view our
“POTPOURRI”
PRINTING
EXHIBITION
IN THE ANNEX
MAY 27th to JULY 21st

