



PORT STEPHENS COMMUNITY ARTS CENTRE NEWSLETTER

December 2025



Cultural Close, off Shoal Bay Road, NELSON BAY
Ph: 4981 3604

Web: <https://pscac.org.au/>

Email: admin@pscac.org.au

In this issue:

- President's Report
- Up Coming Holidays
- People's Choice
- Patchwork Groups
- Painters Exhibition Team
- Christmas Display Take Down
- Thursday Patchwork Group
- Tuesday Patchwork Group
- Pottery Groups
- Gallery Manager
- Spinners & Weavers
- Café News
- Monday PM Watercolours
- Fusion
- From the Secretary
- Café News
- Papercraft
- Bonsai Group
- Mosaic Group
- Embroidery Group
- Garden Group
- Featured Potter
- Watercolour Workshop
- Exploring Art/Pastels
- Monday Mixed Media
- Publicity Officer

President's Report

Thank you to the 27 members who attended our General Meeting and AGM. While it was great to see everyone, only two new members attended, despite welcoming 58 new members since January 2024! General Meetings are a vital opportunity to network across groups and communicate with the Management Committee.

We urgently need new and existing members to volunteer for critical roles. We have two urgent administrative needs: an Events Coordinator (for paperwork and logistics only) and a Roster Coordinator (to manage gallery shifts). We also seek reliable Desk Duty volunteers. Please remember, signing up is a commitment—if you cannot make a shift, you must find a replacement yourself; this is not the task of the Roster Coordinator.

Thank you for electing our new Committee! We are excited to lead another successful year. Please remember that your committee members are volunteers just like everyone else; we dedicate an excessive amount of our personal time to keep our community vibrant and operating, and we can't

operate alone and expect to be treated with respect.

Meryl

Excerpt from the Crown Lands Press Release 10 November 2025

Celebrating excellence in Crown land management: 2025 award finalists revealed



Dedicated Crown land managers from across NSW have been named as finalists in the 2025 NSW/ACT Community Achievement Awards, recognised for their outstanding commitment to caring for public reserves and supporting their communities.

Crown Lands in the NSW Department of Planning, Housing and Infrastructure, proudly supports two award categories, with five finalists for each category this year:

Crown Land Management Excellence Award recognises a volunteer Crown land manager board that has demonstrated

(Continued on page 2)

NSW School Holidays

Monday 22 December to Monday 26 January 2026

PSCAC Holiday Closures

Wednesday 24 December
Christmas Eve - OPEN 10am-1pm

Thursday 25 December
Christmas Day—**Closed**

Friday 26 December
Boxing Day - **Closed**

Wednesday 31 December
New Years Eve—Open 10am - 1pm

Thursday 1 January
New Years Day - **Closed**
Friday 2 January - Open 10am-4pm



People's Choice Award

Congratulations to Elena Leong for her artwork 'Endangered Gold' which has won the People's Choice Award for the display period September to October, entitled 'Magnified.'

Close runners-up were Tom Godfrey for 'Dunes', Mike Verran for 'Steam Punk', Marisa French for 'Sea Horses' and Susan Zhou for 'In a World'.

Votes were received for artworks from almost every group, with special comments received for Kay Hathway 'Amazing photography' and the Embroidery groups 'Needle case'.

Additional thanks must go to the volunteers on desk duty who are doing a great job promoting the People's Choice Award. A record number of 54 votes were counted.

Mel Delaney

Port Stephens Community Arts Centre Newsletter

(Continued from page 1)

outstanding service in managing a Crown reserve for the benefit of their community. There are 540 volunteer land manager boards, made up of over 2,600 individuals, who volunteer their time in caring for over 700 reserves across the state.

Minister for Lands and Property Steve Kamper said:

“Crown land managers across NSW play a crucial role in the care, control and management of community land and these awards recognise those who have made a real difference by improving a Crown reserve for public benefit.

“Crown land reserves allow the public to enjoy and utilise parks and nature reserves, beaches and holiday parks, sports venues and showgrounds, community halls and museums, which are essential to community life and support local tourism and businesses.”

Crown Land Management Excellence Award finalists:

Bogan Gate Recreation Reserve Land Manager has restored its reserve as the social and sporting heart of the small rural township. Managed by a dedicated volunteer land manager board, the reserve delivered major upgrades, including resurfaced tennis courts, new lighting, fencing, and an upgraded clubhouse with Wi-Fi and accessible facilities. It now supports junior and senior tennis programs, the town's first women's netball team, and community resilience initiatives through partnerships with the NSW Rural Fire Service.

Lightning Ridge Area Opal Reserve Land Manager is managed by a diverse local community volunteer board. The reserve balances mining, culture, education, tourism, and conservation. Over the past 18 months, the board has launched the Wandella Education and Research Hub,

partnered with schools and universities to deliver youth and Indigenous programs and implemented an Indigenous-led share farming program across 3,000 acres. It also delivered major environmental works including Hudson pear spraying and feral pest management programs. Infrastructure upgrades to roads and firefighting resources were also completed.

Narrabri Showground Land Manager is home to over a dozen local organisations, from equestrian and harness racing clubs to Riding for the Disabled and the Narrabri Show Society. It hosts a range of events, from shows, rodeos, and youth camps to weddings and emergency evacuations. The volunteer board has recently delivered significant upgrades including new solar power, arena lighting, fencing, pavilions, accessible amenities, and power board safety improvements.

Port Stephens Community Arts Centre Land Manager has revitalised a former World War II hospital into a flourishing community space that celebrates creativity, connection, and resilience. The volunteer-run organisation manages 17 arts and crafts groups, hosting exhibitions, workshops, and social events for over 300 members and the wider public. Recent flood recovery works and improvements have enhanced safety, accessibility, and sustainability.

Windeyer Recreation Reserve Land Manager has transformed a historic reserve into a thriving centre for recreation and community life. Managed entirely by dedicated local volunteers, the reserve now features a new children's playground, upgraded accessible amenities, and improved tennis courts - creating a safe, family-friendly space for residents and visitors alike. Hosting markets, sporting events, fundraisers, and social gatherings, the reserve continues to unite people of all ages while supporting local groups such as the Rural Fire Service and Progress Association.

Patchwork Groups

Pam Tate, a member of the Thursday Patchwork Group passed away a few months ago, her family asked Carole Davies to complete this quilt for the family. Carole has done a beautiful job of completing the blocks, adding the border, quilting and completing the binding. A fitting reminder of Pam's passion and love of patchwork and quilting.

Wendy Barwick



Painters Exhibition Team

The December Painters Exhibition: A Monochrome Challenge!

Get ready to explore a fascinating visual journey!

Our new exhibition, opening on 3 December, promises to be a thrilling challenge for our members and a visually stunning experience for all. As the Exhibition Hanging Team begins to gaze over shoulders and watch the progress of some truly interesting artworks, the buzz in the gallery is palpable.

We are all waiting in earnest to see our gallery speak one compelling language: 'Monochrome 12/25'.

This is one you won't want to miss!

The Hanging Team is an exceptional group who take pride in displaying your paintings.

Please remove Hall Paintings on the Mon/Tues prior to new exhibition.

If you can spare two hours on Tuesday 2 December to assist with hanging please contact Marianne on 0415 338 165.

Cheers

Marianne and The Painters Hanging Team



Christmas Display Take Down

Please be aware that the Christmas Display will now be coming down on Monday 22 December at 2 pm. Unsold stock will be placed in the Manoora Room for collection.

Thursday Patchwork Group

This October Thursday patchwork had our annual retreat for four days at Tocal.

Nolda held a workshop embroidering a panel using a process called Yukka embroidery which uses only one or two colours of embroidery thread and only four stitches, stem, chain, straight stitch and French knots. They then used the embroidered panel to form the outer cover of a folder as shown in the photo (top right). It has various pockets for our bits and pieces. Very useful for our many projects.

The ladies took their own projects to work on as well and we are looking forward to seeing the finished articles.

Our Christmas lunch this year is at Soldiers Point Bowling Club.

Merry Christmas everyone and see you back next year.

Sally O'Neill



Tuesday Patchwork Group

Photo right, is the completed kids quilt that Wendy Harvey has been working on.

The Pottery Groups

With Christmas and school holidays quickly approaching, our Kilns are working overtime. Our potters are very busy making gifts for family and friends, along with pieces to put into The Gallery for sale during the holidays.

Once again we have had another wonderful year of creating fabulous pieces of art from clay.

We are so very fortunate to have three Groups with extremely talented and knowledgeable people, all willing to share their expertise and work together.

Thanks must go to..

- Michael for all his help and advice with working with clay and glazing.
- To Robyn for everything she does behind the scenes.
- To Caryl who attends the meetings, and helps out with Gallery displays.
- And of course to the lovely Kiln Gals, thank you for all you do.

Pottery still remains one of the Art Centres top selling items in the Gallery. Well done to everyone who exhibits.

On a very sad note....

In August we farewelled a much loved member of Pottery and the Art Centre. Our very dear Marilyn Dawes passed away suddenly. She was a shining star and will be remembered with warmth and love. ♥

On behalf of all the Potters, we wish you a

MERRY CHRISTMAS and

A WONDERFULLY CREATIVE NEW YEAR

Colleen and Caryl



Gallery Manager

Exhibition Calendar

The new Exhibition Calendar for 2026/27 has been completed, and a copy circulated to all members on 5 November 2025. New display arrangements will commence from 1 April 2026.

Gallery Display / New Stock tags

Please ensure that new stock is placed in the appropriate cabinets/drawers so display coordinators can make adequate replacements and/or arrangements.

Individual sales tags are to be dated and placed at the bottom and/or back of the items, with the price standing out from the lower right-hand side.

IMPORTANT: Changes to the next Annex Display schedule

Christmas Wonders will be taken down on Monday, 22 December 2025 at 2 pm.

Dates for the Diary/ Annex Display

Small Masterpieces: 23 December 2025 to 13 January 2026

All framed and unframed 2D and 3D items are acceptable with max size excluding frame: approximately 10-15 cm on the longer side.

Items are to be delivered by 2 pm on Monday, 22 December 2025 and placed in the container in the painters' room.

The display will be hung on Monday, 22 December 2025 from 2.30pm.

Unsold items will be taken down on Tuesday, 13 January 2026 after 1:30 pm. Unsold items are to be taken home.

Exploring Art: 14 January to 24 February 2026

Paintings are to be delivered by 12 January 2026 and placed in the painters' room.

The display will be hung on 13 January 2026 from 2 pm.

Unsold items will be taken down on 24 February 2026 after 1:30 pm. One unsold item may be hung in the hallway, depending on available space.

Photography: 25 February to 1 March 2026

Photographs are to be delivered by 24 February 2026 and placed in the Photography cupboard. Large photographs are to be placed on the top shelf in the painters' room. (Space will be tagged beforehand.)

The display will be hung on 24 February 2026 from 2 pm.

Unsold items will be taken down on 31 March after 1:30 pm.

Featured Artisan/Potter

Current - 2 December 2025

Potter: Rhaine Clayton

- 3 December 2025 - 13 January 2026

Painter: Christine Leaming **Potter:** Daad Ruelle

- 14 January - 24 February 2026

Painter: Nada Yonge **Potter:** Meri Andric

- 25 February - 31 March

Painter: Elena Leong **Potter:** Milja Philipson

As we approach the end of year, I want to take a moment to express my sincere gratitude to each and every one of you for your unwavering commitment and enthusiasm. Your dedication has truly made a difference, and it does not go unnoticed.

Wishing you all a happy and joyful festive season! May the New Year bring you prosperity, and new creative opportunities. I am excited about what lies ahead and look forward to continuing our journey of success together.

Meri Andric



Spinners & Weavers

During October the Spinning and Weaving Group held a crampot dyeing session led by Helen Diemar, producing some colourful and interesting results. Crampot dyeing is done by simmering wool sliver or spun yarn in a pot of water to which dye powder of different colours has been sprinkled, resulting in different colour combinations.

Some of our members also attended a spinning retreat in October at Tocal run by the Newcastle Spinners and Weavers and had an enjoyable time meeting and learning from them.

In November the group purchased a wool skeiner to facilitate the process of winding spun and plied wool from a bobbin into a skein for washing and balling.

Our group will be finishing the year with a Christmas lunch on 10 December.

**Margaret Somerville
and Helen Diemar**



Monday PM Watercolour Painters

Our group have had a good year gathering each week to paint, chat and socialise – for some more chatting and socialising than painting! It's been great to not only share our painting skills with one another but also to develop friendships with

like-minded people.

Our group will have our last day on 22 Dec and resume on 12 January 2026. We wish you all a very merry Christmas and a Happy New Year!

Sarah Locke and Roslyn Clarke



Port Stephens Community Arts Centre Newsletter

Fusion Group

Denim was the creative theme for Fusion in November; here are some photos and comments from some of our lovely ladies.

1. My three Santa socks are for my step grandchildren. Sue M

2. Loving the denim tones to create seascapes, reflecting our local natural beauty. Rhonda.

3. Wall hanger created with denim pockets decorated by our members, then sewn together using the front of an old pair of jeans. I enjoyed putting this hanger together with the help and advice from our group. Rose.

4. Enjoying the creativity within the group, we inspire each other with new ideas to explore. We all seem to enjoy the stretching of our imaginations by using recycled materials and unusual objects to make a new creation. Sheila

5. I seem to be the Queen of unfinished projects. In saying that when I do come to the group I am in awe of the creativity that willingly gets shared each week. Great guidance, company and always LOTS OF LAUGHTER. Caron

Jan O'Neal



From the Secretary

Membership

Welcome to the following Newbies:

Lorna Brown, Lyn Brown, Frank Cresp, Jennifer Dash, Julie DeAth, Denise Grecian, Ross Langford, Rosemarie Martin and Diane Williams.

Interesting Statistics:

- 50% of our members joined in the past 30 years
- 50% of our members joined in the last seven years
- Of the total of our members, 20% have joined in the last two years.

Let's Mentor a Member and make sure we retain all of our members for as long as possible!

Jane Parker

Port Stephens Community Arts Centre Newsletter

Café News

The Bonsai show café opening went well with steady numbers both days. Judy's scones sold out both days!

Thanks to Meryl's hard work, the Art Centre received a grant from NSW Community Building Partnerships which included updating the kitchen appliances. Before the new appliances arrived we decided a new coat of paint on the walls was overdue. Judy Jones, Marianne, Rhona Keen and I took up the sugar soap, brushes and rollers to paint the walls and window surrounds. The oven and new fridge arrived in November and have been installed with help from the electrician and Laurie Newton.

We will have a thank you relaunch morning tea on December 4 at 10:30am.

PLEASE CONSIDER joining our crew...we work hard but have good times as well!

Come along to our café meeting to plan for 2026 on Thursday, February 5th at 10 am or email your interest to the admin@pscac.org.au

Antonia Creese



Papercraft

We have had a quietly busy time making lots of cards especially Christmas cards.

In other news the card display has changed a bit with more space for the growing number of different format cards from printmakers and artist prints.

On Thursday 27 November we celebrated our Christmas/ End of Year lunch at Fingal Bay Sports club with a relaxed lunch and mystery gift swap.

Antonia Creese



Port Stephens Community Arts Centre Newsletter

Bonsai Group

Another year is almost over and Santa is getting ready to pack his sleigh and I hope he has plenty of Bonsai supplies for all our good members. We have had a few new members this year who are very welcome and I hope will join us for our Christmas lunch at Nigronis on Thursday, 18 December at 12pm.

We have had some members with health issues during this year so, hopefully, 2026 will be better.

Wishing everyone a safe, happy Christmas and looking forward to another fulfilling bonsai year in 2026.

Happy Bonsaiing

Carol



Mosaics Group

Well what a year we've had at Mosaics. People travelling overseas, interstate, caravanning and moving house. So we were very pleased to be able to have a fantastic pot display in July whilst also keeping our walls updated in the Mosaic area.

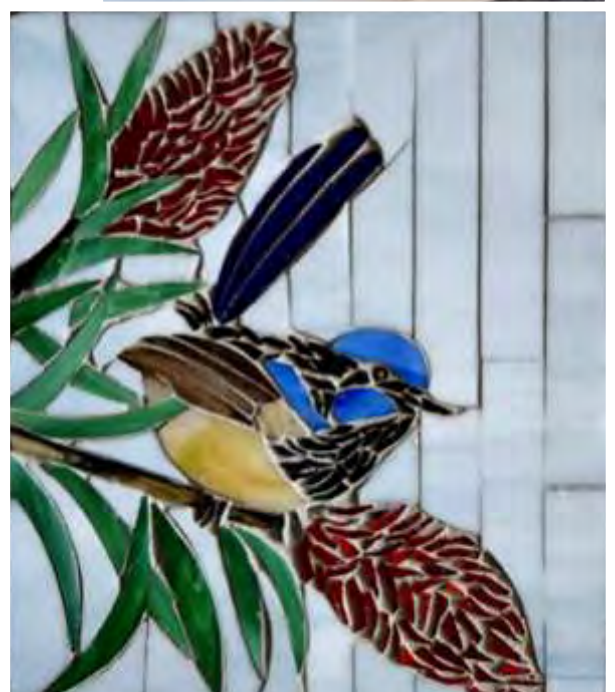
We have a wonderful group of ladies and would welcome anyone interested in joining our group on the second and fourth Wednesday each month, from 9.30 to 12.00 in the Pottery Barn.

Our last day for the year is Wednesday 26 November but we will be back in operation on Wednesday 14 January.

Wishing everyone a beautiful Christmas and New Year

Cheers

Kim Reilly



Port Stephens Community Arts Centre Newsletter

Embroidery Group

In October we had a retreat at Dutchies in a lovely house overlooking the beach. Our original theme was 'Through the Window' but when we arrived the view was so beautiful that we decided to do what we could see from either the foreshore or from the verandah. We used different techniques incorporating chiffon, silk, water colour pencils, embroidery threads and silk threads, beads and shells.

We are now continuing with the design and will have them finished in due course.

This year we are gathering at Wendy's house for our Christmas lunch.

Penelope



Garden Group

Here is a picture of some of the happy garden gurus enjoying our monthly cuppa and catch up where we talk about what jobs needed to be done in our huge garden. At this time of the year, we are getting the garden ready for the hot months of summer with mulching, watering, pruning and of course, much weeding. The list never ends.

We would like to wish all of our members a very happy festive season and hope 2026 smiles on all of us.

Helen

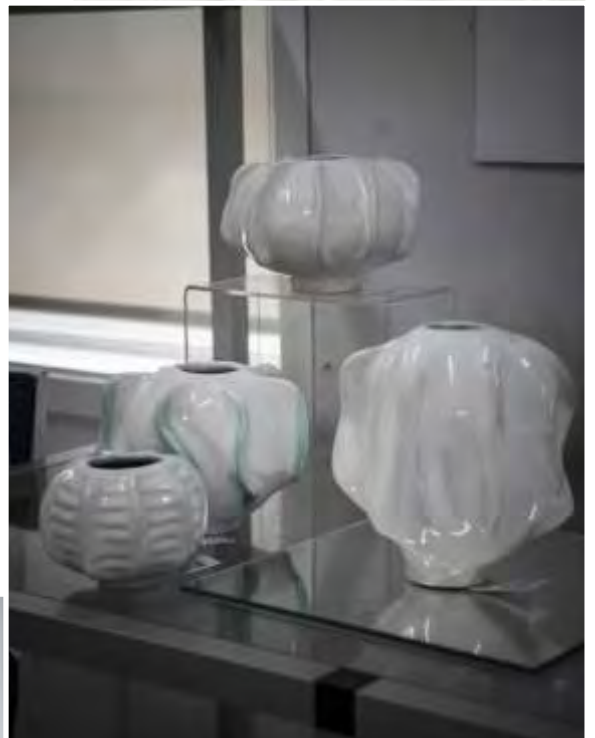


Featured Potter - Rhaine Clayton

Joining Pottery in 2018, Rhaine has created several collections, focusing on hand building techniques.

Rhaine completed an Associate Diploma in Fine Arts in 1992, majoring in Photography and Printmaking. She enjoys learning new creative techniques through books and online courses, including Newcastle University's Natural History Illustration, which inspired her previous collection of animal sculptures and painted pieces.

Her current collection is loosely modelled after the diverse shapes found in marine life, using a combination of glazes and underglazes.



Port Stephens Community Arts Centre Newsletter

WATERCOLOUR WORKSHOP WITH CHERYL BRUCE

Our October weekend workshop with Cheryl Bruce was well attended with 15 members from PSCAC. It was a time to get together to learn, paint and socialise.

Cheryl took the time to get to know us individually and to learn what we expected to gain from the weekend. Day one

she demonstrated her method on how to paint a seascape and Day two, a huge gum tree.

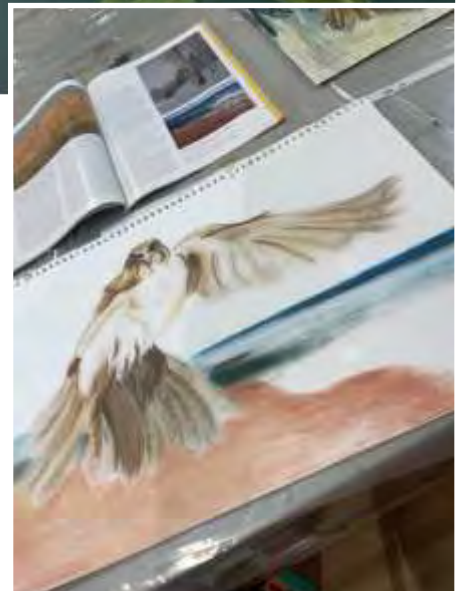
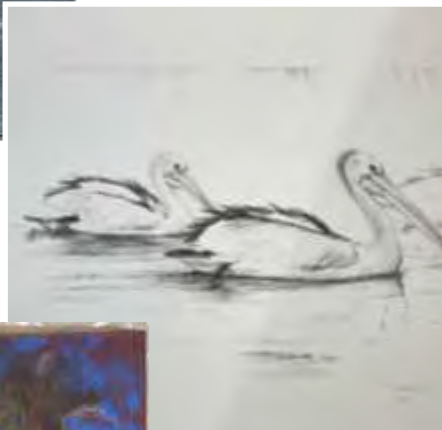
Everyone had an enjoyable weekend and we thank Cheryl for taking the time out of her month long Artist in Residence at Mt Wilson to be with us.

Sarah Locke



EXPLORING ART/PASTELS

After a busy year of exploring new mediums and techniques, we are preparing for a display on the Annex wall mid January. Here is some of our latest work.



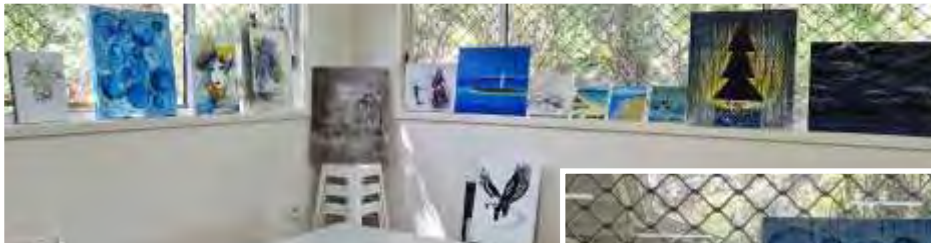
Port Stephens Community Arts Centre Newsletter

MONDAY MIXED MEDIA GROUP

Our Mixed Media Group continues to thrive! We meet every Monday afternoon from 12:30 PM to 3:30 PM.

A Warm Welcome to Our New Members

We are so pleased to welcome our new members! Your participation and willingness to share your time are a very positive addition to our group. Remember, at PSCAC, what you put in, you reap many rewards!



Express Yourself Through Art

We strongly encourage one another to express their own style through their artwork.

Our "Show and Tell" of artwork is a highlight, often bringing many personal visual rewards and new insights.



Taking on New Challenges

The exploration of the Exhibition Themes proves that we are a courageous bunch, not afraid to take on many different and exciting challenges!

Thank you all for being such a wonderful group.

Bev Henry

Publicity Officer

Meet the Maker Sessions

Anyone who is holding a 2D or 3D display in the gallery is invited to take part in a Meet the Maker session during 2026. This is completely voluntary – so if you want to take part, it's up to you to apply. No reminders will be sent!

Select a date within your allocated display dates. Select a morning (10am to 12 noon) or afternoon (1pm to 3pm) session.

You will need to be present in the gallery for that time, and happy to speak with visitors about your work. Recently an

impromptu session Dave Briskham had with some interested visitors resulted in them buying two of his display pieces.

Email application forms are available from admin@pscac.org.au or phone Di Adamson 0414 756 118. You will need to have an artisan's profile and photo, and a picture of some of your work. These will be used for publicity.

Completed Application needs to be made at least six weeks in advance of a Meet the Maker session, to allow time for on-line and print publicity to be organised.

Di Adamson

