



PORT STEPHENS COMMUNITY ARTS CENTRE NEWSLETTER

June 2025



Cultural Close, off Shoal Bay Road, NELSON BAY
Ph: 4981 3604

Web: <https://pscac.org.au/>

Email: admin@pscac.org.au

In this issue:

- President's Report
- People's Choice
- Up Coming Holidays
- Biggest Morning Tea
- Thursday Patchwork
- Exploring Art
- Monday AM Painters
- Garden News
- Secretary News
- Tuesday Patchwork
- Gallery Manager
- Mosaics
- Spinners & Weavers
- Life Drawing/Tai Chi/Plein Air
- Monday PM Watercolour
- Fusion
- Featured Card Maker
- Papercraft
- Social Saturday
- Mixed Media
- Painters Exhibition Team
- Featured Artist
- Featured Potter
- Bonsai Group

Up Coming Holidays

**Monday 9 June King's Birthday
GALLERY OPEN**

**Monday 6 October Labour Day
GALLERY OPEN**

President's Report

As we close Volunteers Week, I want to extend a thank you to everyone who gives their time and energy to help our gallery thrive. Your contribution is the backbone of our success—without our volunteers, we simply couldn't operate.

That said, the past month has highlighted just how essential each volunteer is. On at least four occasions, the gallery was forced to close due to desk duty shifts being unexpectedly unfilled—through illness or oversight. These closures don't just mean locked doors; they result in lost sales, missed opportunities for our artists, and disappointment for our visitors.

To keep our gallery vibrant and welcoming, we urgently need more volunteers, especially for desk duty and exhibition support. If you currently exhibit at the gallery, we encourage you to reach out to the display teams. Each exhibition requires many hands to achieve the polished, professional presentation we're known for—and your help can make a big difference.

There are roles to suit all skills and availability. Beyond the practical side, volunteering is a fantastic way to connect with fellow creatives and be part of a passionate, supportive community.

Remember: many hands make light work—and it's fun too! If you'd like to get

involved, please speak with your display lead or a committee member. Together, we can keep the gallery open, active, and inspiring for everyone.

Replacement Security Cameras – Insurance Claim Update

As part of an insurance claim following damage caused by a power surge during a storm, a new security camera system has been installed. The upgraded system includes cameras positioned both externally and internally across the upper buildings, enhancing surveillance and safety throughout the premises.

In addition to improved camera placement, the system now features a high-performance Wi-Fi router, ensuring strong and consistent connectivity across both buildings. This upgrade supports clearer, uninterrupted footage and reliable system performance.

The new cameras provide continuous monitoring of the garden and upper carpark areas, significantly improving security. The enhanced clarity of the footage will be particularly valuable in identifying and addressing incidents such as hit-and-run damage in the top carpark.

This investment not only restores but greatly improves our site's security, offering peace of mind for members and visitors.

Meryl

People's Choice Award

Congratulations to the following members voted joint winners for their respective artworks in the People's Choice Award for the last exhibition period ending 7th May.

Louise Leddie for her pottery '*Fish Dish*' which was sold and Robyn Killen for her painting '*Serenity*' (right).

There were votes across several categories including Mosaics and Cards. Desk Duty volunteers please bring the People's Choice to the attention of visitors as it helps promote all areas of the Gallery.

Mel Delaney



Australia's **Biggest Morning Tea**

**Every dollar raised helps support
those impacted by cancer.**

When: 19 June 2025

Where: PSCAC

Time: 10.00 am

Details: \$5.00 donation

biggestmorningtea.com.au

Scan to Donate



Unique ID: 922861753



Thursday Patchwork Group

On 1 May our group held a farewell morning tea for Venita Dohnt who is moving to Forster with her hubby John. We got out our vintage cups and saucers (from the back of the cupboard, of course). Sue brought in quite a few of her embroidered table cloths so yes we went a little fancy for the occasion. Venita has been a member for 15 years and will be missed. Wendy Nutt made a beautiful large card in which we all wrote a little message for Venita.

Melinda has finished a beautiful foundation pieced quilt to hang on her lounge room wall. She said she really enjoyed making it but wished she had made it bigger.

A couple of our ladies have made a few quilts for some residents at a Nursing Home who were in need of some warmth and cheer. Nice to know that the quilts we make are used and go to a good cause.

THURSDAY PATCHWORK will be hosting a **BIGGEST MORNING TEA** for Breast Cancer on 19 June at 10pm.



All members are welcome. (see flyer on previous page)

Sally O'Neill

Exploring Art

Our numbers may not be high but we have been busy exploring individual Pastel pieces as well as exploring new techniques using charcoal, tissue, inks and binder medium.

Great work girls!

Christine Leaming



Monday AM Painters

We are getting ready for our exhibition in the Annex. There should be a wide variety of paintings on display. We have an **Oil Workshop** at the end of June with **Kay McFarlane-Smith** (right). Over the weekend of 5-6 July 2025 a **Sketchbook workshop** with **Amanda McLean** (far right). Both workshops should be very exciting.

Moir Coulston (New Leader)



Port Stephens Community Arts Centre Newsletter

Garden News

After the recent deluge of rain, I expect we will be greeted with an abundance of chickweed when we get back into the garden. So unfair that weeds grow so fast!

We are always on the look out for more volunteers in the garden. We have three main sections that need some tender loving care so, if you want to join our merry little team, please call me on 0415646060.

Pictured is our fairy garden which is maintained by

Francine and I have got to say she is doing a superb job.

Thanks everyone.

Helen Love



Secretary News

New Members

Welcome to the following Newbies:

Sue Bray

Marisa French

Neil Hall

Gerry North

Sue Patterson

Louise Salvage

Jane Thomsen

Barbara Wiggins

We now have 326 members. We look forward to continuing to grow our membership and welcome more members to our creative hub. We are keeping membership fees the same as previous years – no increase - (\$50pa) as we want to keep as many existing members as possible and encourage more to join.

Strategic Plan

If you have ideas you would like to contribute, please send to admin@pscac.com.au or put in Secretary's pigeonhole – or talk to any members of the Committee.

Jane Parker

Tuesday Patchwork Group

Photos of some of our group hard at work. Anne is sewing a baby play mat (far right) and Bev is working on her hexagons for her next quilt (right).

Wendy Harvey



Gallery Manager

General

Our art and craft display coordinators are doing a great job ensuring that all art and craft arrangements in the front and back rooms, enclosed areas, hallway, and veranda look fresh and inviting, attracting new visitors.

We encourage current and new members to frequently replace their handcrafted items, ensuring our gallery looks stylish and appealing.

Safety risk resolution

To ensure that our stock is safe, the new safety warning labels (choking hazard) have been distributed to the Group Leaders, whose members may be involved in creating items for small children. The new labels can also be found in the small box among existing labels in our outer office. We encourage you to use them even if in doubt.

Volunteers

Huge thanks to our enthusiastic and passionate volunteers who are engaged in day-to-day activities ensuring our Centre runs smoothly.

New members are encouraged to join our team and engage in the additional activities aiming to strengthen connections and elevate relationships.

- Desk duty with pride. Robyn Bailey helping our new member Barbara Wiggins with her first sale (top right).
- Always smiling! Caron Baker assessing new cards for display (middle).
- Sue George shows diligence and dedication while recording invoices (right).



DATES TO REMEMBER

Annex Display

18 Jun - 29 Jul - Monday AM Painting

30 Jul - 09 Sep - Watercolour, Monday PM Painting

Special Event

18 Jun - 29 Jul - Mosaic Pots

Meri Andric



Mosaics Group

I have had the privilege of welcoming a lot of new ladies into our group recently, and they have slotted in very comfortably which is not surprising considering the friendliness of our group. We are very busy preparing for our plant pot display to be held at the end of July and so far it is looking great!"

Madeleine Quinlan



Spinners & Weavers

Spinning and Weaving Group

The Spinning and Weaving Group has been very busy in the last few months.

In April we held a workshop to learn and practise how to dye carded wool sliver with wool dyes. Terri-Anne kindly led the workshop and after showing us how to apply the dyes correctly we set them in the microwave, producing many beautiful coloured wool slivers for spinning or felting. At the end of April we also visited our Tea Gardens members at their spinning group at the Myall Community Art and Craft Centre and had a lovely day spinning with them and enjoying the local fish and chips for lunch.

In May we held a camp at **The Retreat**, Anna Bay for two days with nine people attending. We had a very enjoyable time thanks to the great organisation of Jen and Louise and Lyn's wonderful cooking. We also held workshops there for making "weave-it" squares with a pin loom given by Louise, the tying of useful knots with Lyn and carding with the wildcarder machine to make colourful batts to spin and a fun activity creating an animal from craft materials with Helen. We still found time to relax and spin and chat with each other. In addition there were some great lucky door prizes and no one missed out!

The group has also been busy finishing and organising items for our exhibition in the Annex which we put up on 7 May and will be on display until 17 June. There are a variety of handspun/ handknitted or handwoven scarves, beanies, shawls, cardigans etc ready to wear for winter, as well as smaller gift items.

Photos

4544 - Mel happy winner of the first lucky door prize at camp - necklace made and donated by Ria

5503 - Terri-Anne showing samples of dyed wool sliver

5504 - Terri-Anne applying dyes to the wool sliver

5505 - Busy at the dyeing workshop

5507 - Terri-Anne and Jan preparing to dye wool

5561 - Getting items ready for our exhibition in the Annex

5730 - Helen, Margaret and Jan wool carding on the verandah at camp

5731- Mel, Jan and Louise working on pin looms at camp

5735 - Helen, Brenda and Terri-Anne spinning and knitting at camp

Margaret Somerville



Port Stephens Community Arts Centre Newsletter

Life Drawing

Attention all artists we are extending an invitation to join us Friday 6th June 9.30-12.30. Bring your paints, pencils, paper and enjoy the challenge of drawing from life. Our model will be clothed and posing to a theme usually recognisable i.e. Degas dancers, one of Shakespeare's characters etc. Cost \$20 which pays for model, maintenance and morning tea. Hope to see you there Robyn.

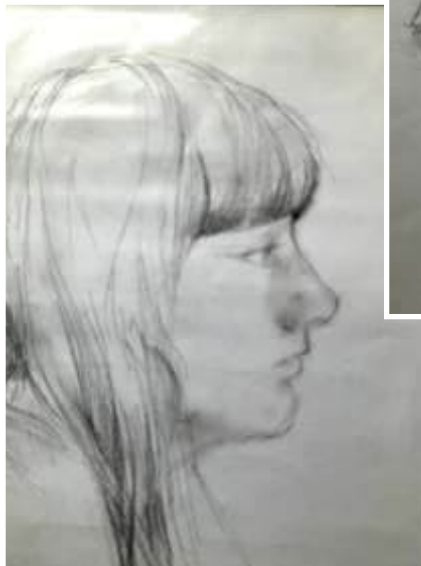
Tai Chi

Nothing to report for Tai Chi, barely able to meet due to weather.

Plein Aire

Plein Aire much the same however should the sun shine on a Wednesday we are at Boat Harbour, Kingsley Beach side on the roadside.

Robyn



Port Stephens Community Arts Centre Newsletter

Monday PM Watercolour Painters

Many of our group continue to be busy preparing paintings for the gallery exhibitions. Carol Young will be a Feature Artist in June and Prue Stone has recently exhibited her work at Lion Studio. Wonderful to see the talents of both these artists. We'll also be exhibiting paintings in the annex in July – August so loads to do. A big thank you to Bev Henry for providing

insight into Light and Luminosity and sharing her knowledge demonstrating paintings in both acrylic and watercolour using tone.

Sarah Locke & Roslyn Clarke



Fusion

Over several weeks our Fusion ladies have been very busy creating.

Our first project was of a poultry nature; chooks were fashioned in fabric etc in all different shapes and sizes. There were some interesting interpretations of chooks created.

Beads were next on the agenda, with ladies using their imagination, many varied ideas were produced, from wall hangings, brooches, decorated bottles, pens and glasses hangers. It was a fun project!

At present we are working with our Inktense pencils. As these pencils can be used in many varied ways, some interesting creations are coming together.

Jan O'Neill



Featured Card Maker—Anne Jacobs

I moved to the Bay in 2016 because I had fond memories of the wonderful scuba diving. I joined the PS Community Arts Centre soon after arriving and papercraft took over from diving!

Apart from papercraft at the Arts Centre I volunteer with Vinnie's and support the Homestead Village and Lighthouse Baptist church activities.

My love affair with crafts started in primary school with the Church Girls Club. I still love crafting especially with paper and spend many happy hours crafting with friends and family.

I particularly like exploring new techniques, repurposing materials, exploring colour, multi-dimensional cards and collage.



Papercraft

We have a mix of work on your own projects and workshops for those who want to participate.

Our group is very welcoming and happy to give a hand to newbies to the craft.

On 1 May, we had a fun on-the-spot card challenge within the session. Points were awarded for using some of the stash in our cupboard and matching one of our previous layouts plus everyone voting on the prettiest, neatest etc.

Jann Wittig, Doreen Lambourne (above right) and Mary Cunningham (right) all engrossed in creating their cards.

It was one of the quietest, busiest sessions.

The winner, Mary was presented with the PAPERCRAFT CHALLENGE CUP! (below)



Antonia Creese



Social Saturday

Social Saturday continues to be popular with a range of varying activities each week.

In recent weeks we have had an *'Ink Abstract Workshop'* by Judy Jones, a *'Large Canvas Workshop'* by Bev Henry and a *'Repurpose of Old items to New'* by Judy Jones.

Future Workshops include *'Painting of Emu Eggs'* and *'Bookmaking'*.

Sessions run from 10.00am to 12.30pm

Contact Judy Jones for further information.

Judy Jones



Mixed Media Group

Bev extends a warm welcome to all new members joining the Mixed Media Group.

Just a friendly reminder to everyone to get painting if you

haven't already for our next exhibition, *'Light and Luminosity'* 18 June.

Finally, a big congratulations to all who attended the 2-colour workshop last week!

Marianne Newton

Painters Exhibition Team

The Painters Exhibition Team extends its sincere gratitude to all members for their heightened focus on artwork presentation. We've observed a significant improvement in the professional display of your remarkable creative talent.

To ensure continued excellence, please adhere to the following guidelines:

- **Labels:** Print clearly in black pen with correct date code eg, 6/25 (ie. month/year)
- **Hanging:** Ensure all artworks are fitted with D-hooks/ picture hooks and twisted wire. An example is on the painters notice board.
- **Delivery:** Artwork must be delivered by 2pm on the Tuesday of the hanging week.
- **Size:** Up to 1M on any one side.
- **Number of Paintings:** 2

Next Exhibition

- **Date:** 18 June to 29 July
- **Theme:** Light & Luminosity 6/25

Call for Exhibition Hanging Team Volunteers!

We are urgently seeking your commitment to join our Exhibition Hanging Team. This vital team meets for two hours every six weeks as per Exhibition Calendar.

We're looking for a commitment from each of the

Painters Groups:

- Pastel Group: 2 people
- Monday AM Group: 2 people
- Mixed Media: 2 people
- Monday Watercolour: 2 people

Please note that you don't need to climb ladders; there are many other crucial tasks where your help is greatly needed. Your participation is incredibly valuable and we ask you to consider this request as an urgent matter.

If you are able to assist, please contact Marianne on 0415 338 165 or

email: mariannenewton@hotmail.com.

Thank you from the Team

Marianne Newton



Featured Artist - Marianne Newton

Following on from a successful business career in soft furnishings, Marianne decided that after retiring she could dedicate her talents to her passion of creating art.

Marianne enjoys working with texture as well as colour and design. She incorporates texture using various media including acrylics, inks and pastels. Marianne's work can be recognised by her signature '**Yanney**' – a strong link to her Dutch heritage.

For this exhibition, Marianne has created a visual celebration of a quintessential Nelson Bay holiday. Through a collection of simple artworks, she has captured the essence of the region's most enjoyed activities: the thrill of fishing in its waters, the exhilaration of surfing its waves, the freedom of cycling its scenic paths, the tranquility of bushwalking its natural trails and the relaxed pleasure of its charming cafes. All pieces, rendered in a straightforward style, contribute to a cohesive display that evokes the laid-back coastal lifestyle and outdoor adventures that define a getaway in beautiful Nelson Bay.



Featured Potter - Kyle Wallace

Kyle has been a potter and sculptor for four decades and has always stretched the boundaries for what clay can do.

His pieces are influenced by traditional Japanese and European pottery and styles.

"Throwing can be pleasure and pain, when pushing clay to its boundaries and firing them in the crucible of fire to bring amazing results."

Kyle is also a Leather worker and makes retro leather handbags in tough Black and Red motorcycle leather.



Bonsai Group

We have had so much rain that I can't remember when I last had to water my plants. Let's hope the roots survive and have not been drowned.

A trading day was held last meeting and was very successful so we may have another one at some time.

With winter upon us there is not much happening with the

trees but it is a good time to make sure you have pots and soil ready for Spring re-potting.

Happy Bonsaing!

Carol

